



Wardrobe Cabinet Fitting

WHY NEED TO CHOOSE MAX WORLD WARDROBE FITTING

Your bedroom is your sanctuary, and our Wardrobe Fittings are here to transform it

into a haven of both style and organization. Experience effortless mornings as our fittings maximize your wardrobe's storage space, ensuring every garment and accessory finds its place seamlessly. But it is not just about practicality; our fittings are a visual masterpiece. Crafted with precision and available in an array of elegant finishes, they enhance your bedroom's aesthetics. Durability is woven into every detail, ensuring lasting beauty and dependable functionality. Customizable to your unique preferences, our Wardrobe Fittings allow you to create a bedroom closet that's a true reflection of your style. Elevate your bedroom today!

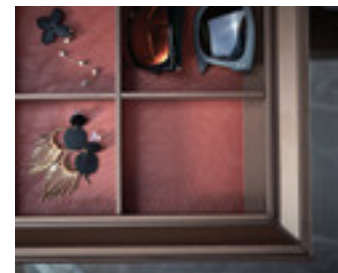
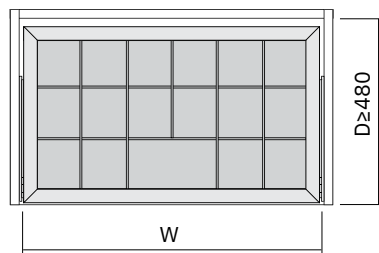


MORPHE Series

GRAYER Series



[MORPHE] CORTICAL JEWELRY BOX



Functional Features

DESIGN

This product combines the styles of simplicity, originality and practicality with saddle color leather and elegant thread sewing, to ensure the texture of materials and technology while giving the product a distinctive personality.

MATERIAL

Modern fashion appearance of the aluminum frame with new high-purity aluminum alloy material, can ensure the stability of the product.

FUNCTION

With the fully concealed silent soft-closing slide, It can be keep the drawer running smooth.

INSTALLATION

The product is suitable for the standard cabinet, the optimum thickness of the cabinet board is 16-18mm

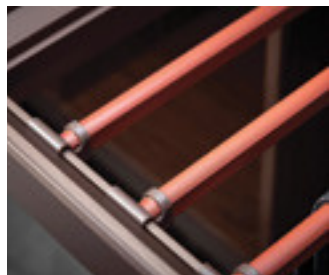
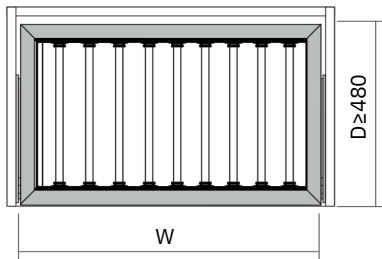
FEATURE

The combination of beige and saddle color bring a whole new definition to the wardrobe environment. The width of the frame is adjustable according to the internal wardrobe with adjustable for 50mm.

Code	Cabinet	W x D x H	Color
SWB 21820AM.060	600	564 x 465 x 76	Mocha
SWB 21820AM.090	900	864 x 465 x 76	Mocha



[MORPHE] TROUSERS RACK



Functional Features

DESIGN

The trousers rack is adjustable, you can choose it at will, and you can add racks as needed, so it is worth having a storage concept.

MATERIAL

The appearance of the modern and fashionable aluminum frame adopts a new type of high-purity aluminum alloy material, which can ensure the stability of the product.

FUNCTION

With the help of the completely hidden silent soft sliding device, the trousers rack can keep sliding smoothly.

INSTALLATION

This product is suitable for starting cabinets, the best thickness of the cabinet board is 16-18mm

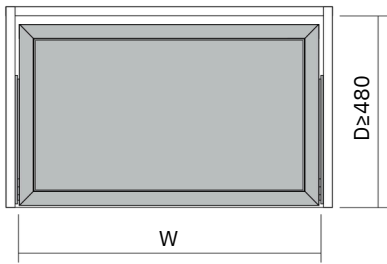
FEATURE

The combination of beige and saddle brings a new definition to the wardrobe environment. The width of the frame can be adjusted according to the internal wardrobe, and the adjustable range is 50mm.

Code	Cabinet	W x D x H	Color
SWB 21801M.060	600	564 x 465 x 76	Mocha
SWB 21801M.090	900	864 x 465 x 76	Mocha



[MORPHE] LEATHER BASKET



Functional Features

DESIGN

This product combines the styles of simplicity, originality and practicality with saddle color leather, and elegant thread sewing, to ensure the texture of materials and technology while giving the product a distinctive personality.

MATERIAL

Modern fashion appearance of the aluminum frame with a new high-purity aluminum alloy material, can ensure the stability of the product.

FUNCTION

With the fully concealed silent soft-closing slide, it can be keep the leather basket smooth sliding.

INSTALLATION

The product is suitable for the standard cabinet, the optimum thickness of the cabinet board is 16-18mm

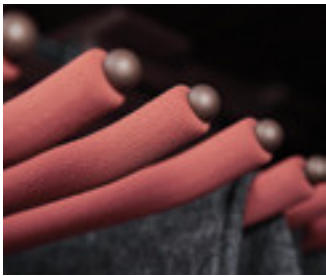
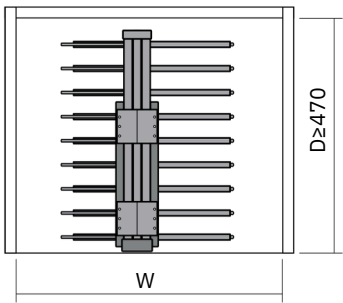
FEATURE

The combination of beige and saddle brings a whole new definition to the wardrobe environment. The width of the frame is adjustable according to the internal wardrobe with adjustable range 50mm.

Code	Cabinet	W x D x H	Color
SWB 21817M.060	600	564 x 465 x 170	Mocha
SWB 21817M.090	900	864 x 465 x 170	Mocha



[MORPHE] TOP MOUNTED PANTS
RACK WITH V SHAPE



Functional Features

DESIGN

Top-mounted V shape design, make the limited space more diversification. Flannelette soft elastic, protection of the beloved clothes, no crease.

FUNCTION

With the fully concealed silent soft-closing slide, it can be keep the pants rack smooth sliding.

FEATURE

The overall push and pull design more convenient to put pants.

MATERIAL

Nano dry electroplating rack makes the color of the product consistent, stylish, and has strong rust resistance, making it more practical and bringing some surprises to the furniture.

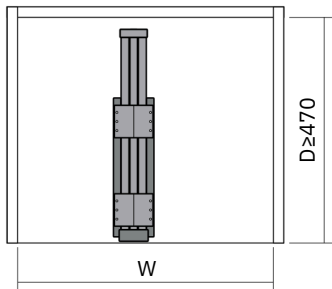
INSTALLATION

Top installation, simple and convenient, let us install the product when more arbitrary.

Code	Cabinet	W x D x H	Color
SWB 21003M	≥500	340 x 455 x 140	Mocha



[MORPHE] CLOTHES HOLDER
WITH EIGHT BEADS



Functional Features

DESIGN

Different top-loading hangers create an extraordinary life. Make the wardrobe storage more convenient and more reasonable.

FUNCTION

With the fully concealed silent soft-closing slide, it can be keep the clothes holder smooth sliding.

FEATURE

The overall push and pull design more convenient to put clothes.

MATERIAL

Nano dry electroplating rack makes the color of the product consistent, stylish, and has strong rust resistance, making it more practical and bringing some surprises to the furniture.

INSTALLATION

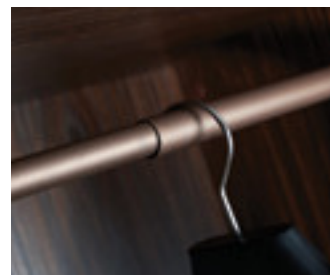
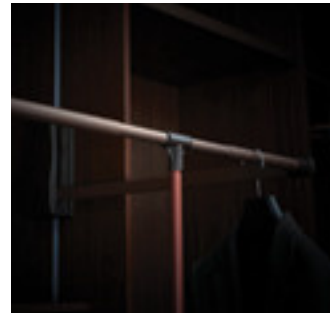
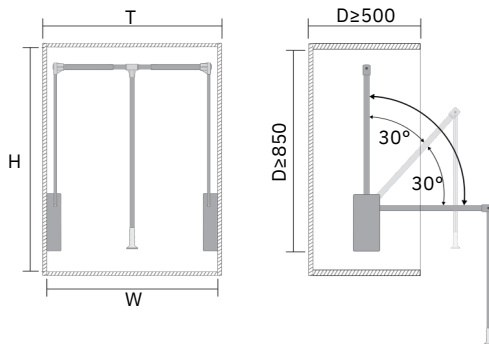
The top installation is not restricted by the cabinet. Simple and convenient, so that we can install the product more freely.

Code	Cabinet	W x D x H	Color
SWB 21004M	≥500	115 x 455 x 115	Mocha

every home needs



[MORPHE] WARDROBE LIFT



Functional Features

DESIGN

Hydraulic design and soft close pump inside to ease pull up and down. Give you a comfortable home experience, The design is suitable for high cabinet.

FUNCTION

Two way damper, long lasting use, easy to reach and pull down.

FEATURE

The bar is designed to be adjustable. It has three sizes and fits the wardrobe of different widths and specifications.

MATERIAL

The product is made of high-purity aluminum alloy material, which ensures the toughness and stability of the material, and it is fashionable in appearance.

INSTALLATION

It is suitable to install at top of the 2.4M high cabinet and making full use of the space of the cabinet. The product is suitable for the standard cabinet, the optimum thickness of the cabinet board is 16-18mm.

Code	W x D x H	Color
SWS 21205M.090	(920-1240) x 140 x 820 (830-1150)	Mocha



[MORPHE] TIE RACK



Functional Features

DESIGN

Tie racks can be used as high-class wardrobe cabinets in universal color which is mocha. Mocha is a modern color design with a simple design, western style, aesthetic, and elegance.

FUNCTION

With a fully soft-close runner slide. It can be silent when sliding (smooth slide). The width can be adjustable according to the internal wardrobe /cabinet with an adjustable size of 50mm.

FEATURE

Tie rack overall using high class and modern mocha tone to show understated luxury life.

MATERIAL

Simple yet in a modern style's frame by using the latest high-purity aluminum material that can assure stability and modern appearance.

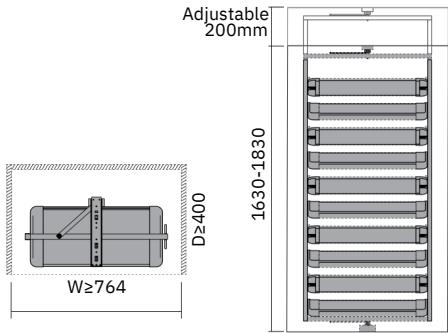
INSTALLATION

Side installation does not matter the size of the cabinet yet easy to install with a simple and convenient installation. The installation can be done according to your requirement.

Code	W x D x H	Color
SWS21001	100 x 430 x 80	Mocha



[MORPHE] 360° ROTATING SHOE RACK



Functional Features

DESIGN

360 degrees revolving; Split-layer design can hold twice as many shoes; Maximize the use of space, choose shoes follow one's inclination.

FUNCTION

Cabinet height is no longer limited, no need to change cabinet can be installed. Double-sided convenient rotation pull out, easy rotation; Below the circumstance that ark height allows, adjust coping height to grow, can put down winter boot.

FEATURE

Large storage capacity, Each layer can be placed more than 3 pairs of shoe rack. The highly of the frame is adjustable according to the internal wardrobe with-adjustable from 200mm.

MATERIAL

Modern fashion appearance of the aluminum frame with a new high-purity aluminum alloy material, can ensure the stability of the product.

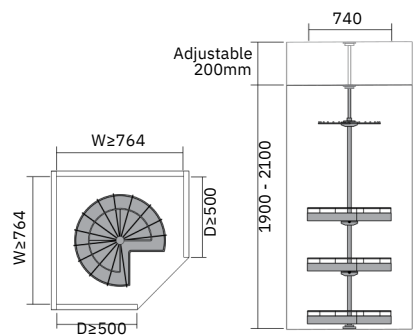
INSTALLATION

The product is suitable for the standard cabinet, the optimum thickness of the cabinet board is 16-18mm.

Code	Cabinet	W x D x H	Color
SWS 21208M.080	≥800	700 x 360 x 1630-1830 (10 Layer)	Mocha



[MORPHE] 4 LAYERS ROTATING BASKET



Functional Features

DESIGN

Solve corner space for you, make full use of corner space, No intermediate partition, easy to take at a glance.

FUNCTION

Each layer of built-in bearing device, unique, easy and smooth rotation 360°; The upper and lower layers rotate independently. The corner space that made the maximum use.

FEATURE

The height can be adjusted for 200mm. The cabinet suitable for 1900-2100mm height.

MATERIAL

The main body adopts nano dry plating process, with strong anti-rust ability, multi-layer design and powerful storage function.

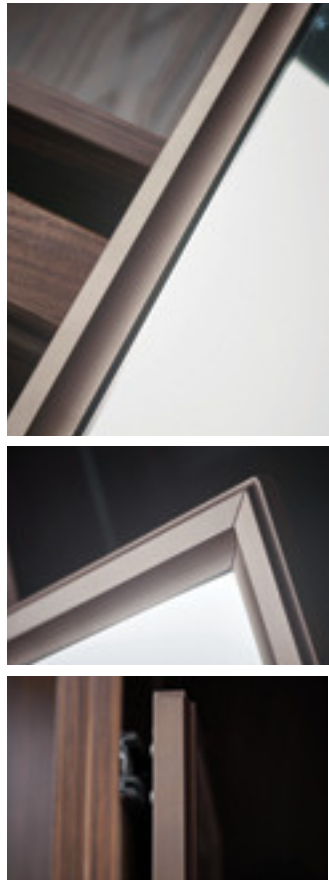
INSTALLATION

The product is suitable for the standard cabinet, the optimum thickness of the cabinet board is 16-18mm.

Code	Cabinet	W x D x H	Color
SWB 21209-2M	≥800	720 x 720 x (1900-2100)	Mocha



[MORPHE] REVOLVE MIRROR



Functional Features DESIGN

The revolve mirror adopts European style design, can be hidden, can be rotated at multiple angles, and the pull-out design is smoother, covering a small area and large wardrobe space.

MATERIAL

The product is made of high-purity aluminum alloy material, which ensures the toughness and stability of the material, and fashionable in appearance.

FUNCTION

Easy to operate, easy to rotate, promote the collection step in place, no need to change the position of clothes hanging in the wardrobe, suitable for all styles of wardrobe collection.

INSTALLATION

Side panel installation.

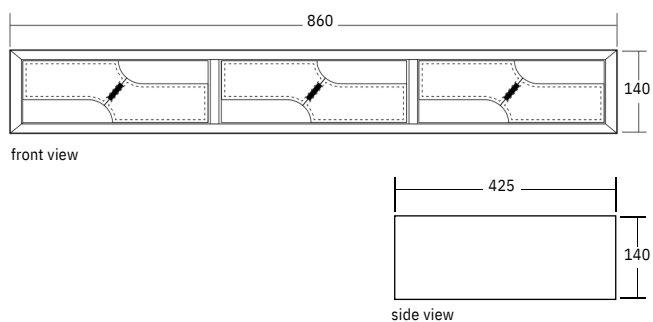
FEATURE

A thin body that occupies only one piece of clothing.

Code	Cabinet	W x H	Color
SWS 21604M-120	≥350	350 x 1200	Mocha

every home needs

LEATHER TRIPLE DRAWER

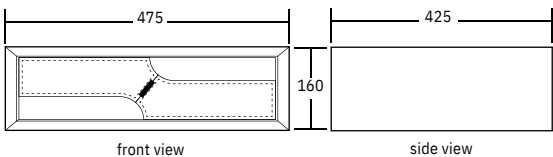


Code	Cabinet	W x D x H	Color
SWS 21504-090	900	860 x 425 x 140	Grey

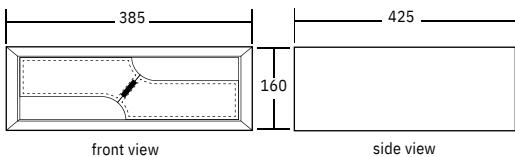
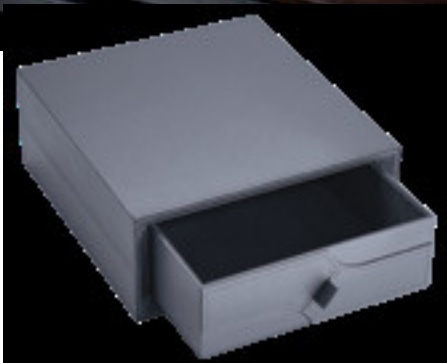
[GRAYER] LEATHER DRAWER SET



LEATHER SAFE BOX WITH FINGERPRINT



LEATHER SINGLE DRAWER 900MM



Functional Features

DESIGN

This drawer set is combination from selection fabrics and combinations, so that it will let your cabinet wardrobe new visual experience.

FUNCTION

The leather drawer set inside matches with flannel and can protect your valuables.

FEATURE

External leather is customized and handcrafted to enhance its luxury performance.

MATERIAL

Our leather fabrics using platinum grey colour to associated with luxury and exclusivity.

INSTALLATION

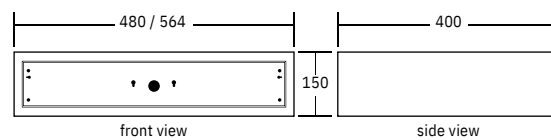
Products don't require installation.
Free to use.

Code	Cabinet	W x D x H	Color
SFT 43209-G	900	475 x 425 x 160	Grey

Code	Cabinet	W x D x H	Color
SWS 21702-090	900	385 x 425 x 160	Grey



[GRAYER] DIGITAL SAFE DRAWER



Functional Features

DESIGN

The internal installed external battery design, the replacement of the battery more convenient, effective prevention of leakage.

FUNCTION

Digital password control switch. The side mounted external is manual key and convenient for manual opening.

FEATURE

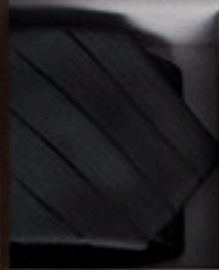
The safe drawer hidden in the wardrobe, embedded installation, touch-type digital buttons, high security, protect your valuables.

MATERIAL The safe drawer made of selected high-quality steel, processed by black baking paint, wear-resistant and durable, strong and anti-prying.

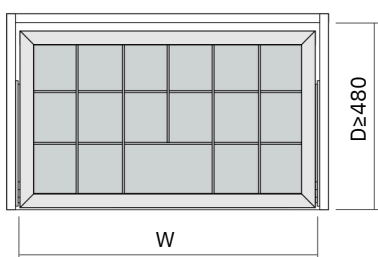
INSTALLATION

Simple installation, fast and convenient, only need a few screws to install.

Code	Cabinet	W x D x H	Color
SFT 43211	500	480 x 400 x 150mm	Grey
SFT 43210	600	564 x 400 x 150mm	Grey



[GRAYER] CLASSIFICATION BOX



Functional Features

DESIGN

The combination of high grade ash and flannelette, exquisite production technology and feel make life more warm. Suitable for different styles of clothing.

FUNCTION

With the fully concealed silent soft-closing slide. It can be keep the drawer running smoothly.

FEATURE

The width of the frame is adjustable according to the internal wardrobe with-adjustable from 50mm.

MATERIAL

Modern fashion appearance of the aluminum frame with new high-purity aluminum alloy material, can ensure the stability of the product.

INSTALLATION

The product is suitable for the standard cabinet, the optimum thickness of the cabinet board is 16-18mm

Code	Cabinet	W x D x H	Color
SWS 21507.060	600	564 x 460 x 71	Grey
SWS 21507.090	900	864 x 460 x 71	Grey



[GRAYER] FLEXIBLE JEWELRY BOX



Functional Features

DESIGN

The combination of high grade ash and flannelette, exquisite production technology and feel make life more warm. Suitable for different styles of clothing.

FEATURE

The width of the frame is adjustable according to the internal wardrobe with-adjustable for 50mm.

MATERIAL

Modern fashion appearance of the aluminum frame with new high-purity aluminum alloy material, can ensure the stability of the product.

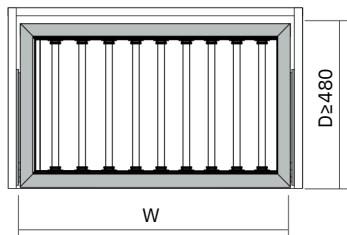
INSTALLATION

The product is suitable for the standard cabinet, the optimum thickness of the cabinet board is 16-18mm

Code	Cabinet	W x D x H	Color
SW\$22301	600-900	(600-900) x 410 x 60	Grey



[GRAYER] TROUSERS RACK



Functional Features

DESIGN

The trouser rack is adjustable, you can choose as you wish, and you can add racks as needed, so it is worth having a storage concept.

MATERIAL

The appearance of the modern and fashionable aluminum frame adopts a new type of high-purity aluminum alloy material, which can ensure the stability of the product.

FUNCTION

With the help of the completely hidden silent soft sliding device, the trouser rack can keep sliding smoothly.

INSTALLATION

This product is suitable for starting cabinets, the best thickness of the cabinet board is 16-18mm

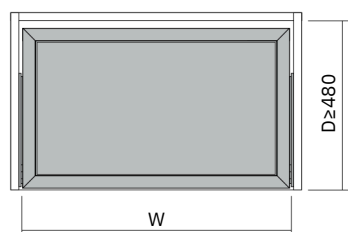
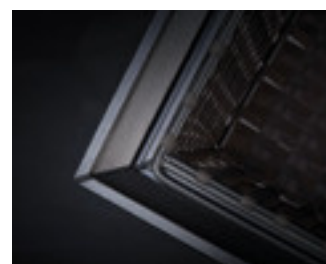
FEATURE

The combination of beige and saddle brings a new definition to the wardrobe environment. The width of the frame can be adjusted according to the internal wardrobe, and the adjustable range is 50mm.

Code	Cabinet	W x D x H	Color
SWS 21501.060	600	564 x 460 x 71	Grey
SWS 21501.090	900	864 x 460 x 71	Grey



[GRAYER] RATTAN-LIKE BASKET



Functional Features

DESIGN

PE rattan-like material has a good flame retardant effect, good toughness, not stagnant water and have a certain pest control effect.

FUNCTION

With the fully concealed silent soft-closing slide, It can be keep the basket smooth sliding.

FEATURE

The width of the frame is adjustable according to the internal wardrobe with adjustable from 50mm.

MATERIAL

Modern fashion appearance of the aluminum frame with a new high-purity aluminum alloy material, can ensure the stability of the product.

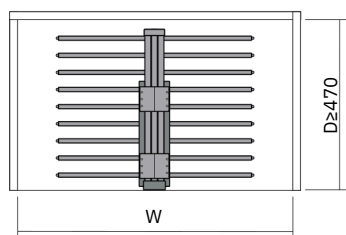
INSTALLATION

The product is suitable for the standard cabinet, the optimum thickness of the cabinet board is 16-18mm.

Code	Cabinet	W x D x H	Color
SWS 21502.060	600	564 x 460 x 170	Grey
SWS 21502.090	900	864 x 460 x 170	Grey



[GRAYER] TWO ROW TOP MOUNTED PANTS RACK



Functional Features

DESIGN

Double row rack design, so worthy of the concept of storage. Flannelette soft elastic, protection of the beloved clothes, no crease.

MATERIAL

Nano dry electroplating rack makes the color of the product consistent, stylish, and has strong rust resistance, making it more practical and bringing some surprises to the furniture.

FUNCTION

With the fully concealed silent soft-closing slide. It can be keep the pants rack smooth sliding.

INSTALLATION

Top installation, simple and convenient, let us install the product when more arbitrary.

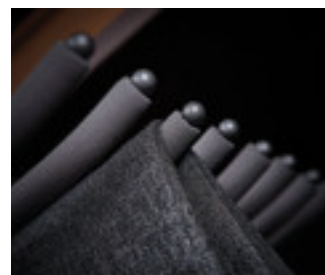
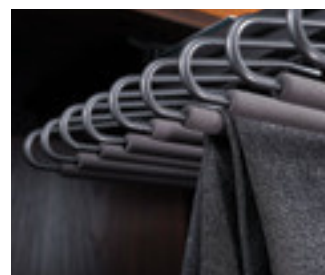
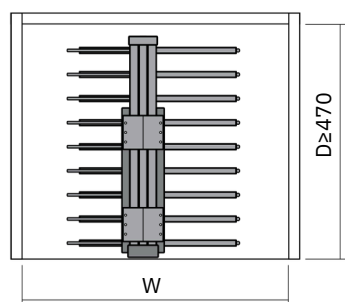
FEATURE

The overall push-pull design is more convenient to receive clothes, standard with the same color non-slip flocking tube, effectively prevent pants from falling down.

Code	Cabinet	W x D x H	Color
SWS 21002	≥700	630 x 455 x 115	Grey



[GRAYER] TOP MOUNTED PANTS RACK WITH V SHAPED



Functional Features

DESIGN

Top-mounted V shaped design, make the limited space more diversification. Flannelette soft elastic, protection of the beloved clothes, no crease.

FUNCTION

With the fully concealed silent soft-closing slide. It can be keep the pants rack smooth sliding.

FEATURE

The overall push and pull design more convenient to put pants.

MATERIAL

Nano dry electroplating rack makes the color of the product consistent, stylish, and has strong rust resistance, making it more practical and bringing some surprises to the furniture.

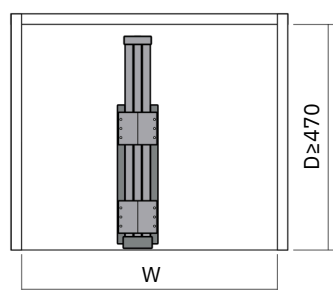
INSTALLATION

Top installation, simple and convenient, let us install the product when more arbitrary.

Code	Cabinet	W x D x H	Color
SWS 21003	≥500	340 x 455 x 140	Grey



[GRAYER] CLOTHES HOLDER WITH EIGHT BEADS



Functional Features

DESIGN

Unique clothes holder with eight beads, to create an extraordinary life.

FUNCTION

With the fully concealed silent soft-closing slide. It can be keep the clothes holder smooth sliding.

FEATURE

The overall push and pull design more convenient to hang clothes.

MATERIAL

Racks in Nano dry plating, keep products in color coordination, fashion, strong rust resistance make, it more practical and bring some warmth for the furniture.

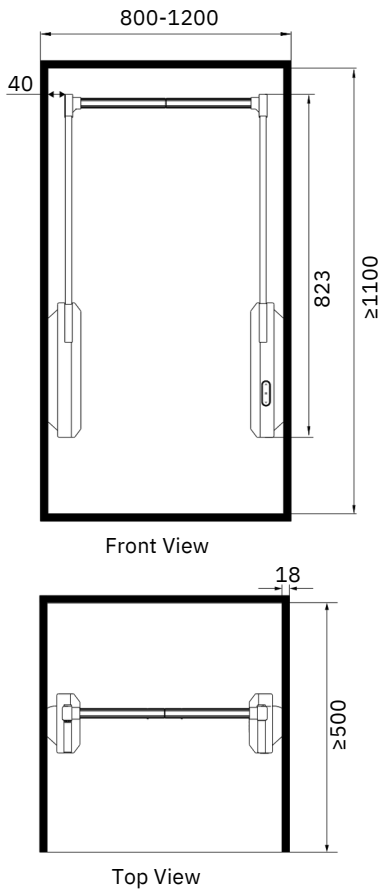
INSTALLATION

Top installation, not restricted by cabinet, simple and convenient, let us in the installation of products more arbitrary.

Code	Cabinet	W x D x H	Color
SWS 21004	≥500	115 x 455 x 115	Grey



[GRAYER] AUTOMATIC WARDROBE LIFT



Functional Features

DESIGN

Using motor synchronous control technology and segmented speed control technology to ensure smooth and seamless descent and ascent of clothing.

FUNCTION

Installed on both sides of the wardrobe for the convenience of users to hang clothes in hard-to-reach places. It offers two control methods: a front control panel and a remote control, making it easy and convenient to use.

FEATURE

Utilizing dual motor lifting for a high weight capacity, with a maximum load-bearing capacity of 15kg. Suitable for 2.4-meter-tall cabinets, making efficient use of space.

MATERIAL

Crafted from aerospace-grade Al-Mg alloy materials, the swing arms and hanging rods boast both strength and sophistication, adorned with a resilient powder coating finish on their surfaces

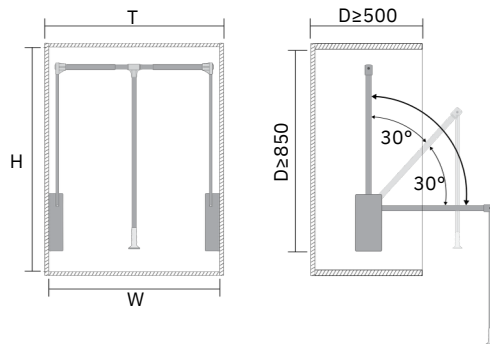
INSTALLATION

Wall-mounted design for easy installation and an elegant appearance. Adjustable width by 200mm, providing flexibility for various cabinet widths.

Code	W x D x H	Cabinet Width	Color
STW 22201	(764-964) x 143 x 823	800-1000	Dark Grey
STW 22202	(964-1164) x 143 x 823	1000-1200	Dark Grey



[GRAYER] WARDROBE LIFT



Functional Features

DESIGN

Hydraulic design and soft close pump inside to ease pull up and down. Give you a comfortable home experience. The design is suitable for high cabinet.

FUNCTION

Two way damper, long lasting use, easy to reach and pull down.

FEATURE

The bar is designed to be adjustable. It has three sizes and fits the wardrobe of different widths and specifications.

MATERIAL

The product is made of high-purity aluminum alloy material, which ensures the toughness and stability of the material, and is fashionable in appearance.

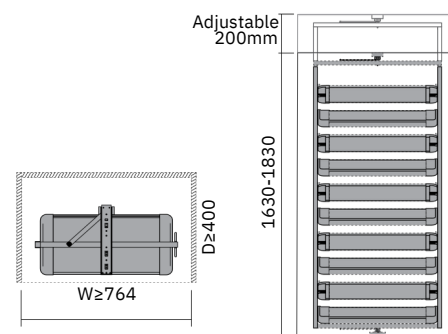
INSTALLATION

It is suitable for installing the top of the 2.4M height cabinet and making full use of the space of the cabinet. The product is suitable for the standard cabinet, the optimum thickness of the cabinet board is 16-18mm.

Code	W x D x H	Color
SWS 21205.060	(690-920) x 140 x 820 (600-830)	Grey
SWS 21205.090	(920-1240) x 140 x 820 (830-1150)	Grey



[GRAYER] 360° ROTATING SHOE RACK



Functional Features

DESIGN

360 degrees revolving; Split-layer design can hold twice as many shoes; Maximize the use of space, choose shoes follow one's inclination.

FUNCTION

Cabinet height is no longer limited, no need to change cabinet can be installed. Double-sided convenient rotation pull out, easy rotation; Below the circumstance that ark height allows, adjust coping height to grow, can put down winter boot.

FEATURE

Large storage capacity, Each layer can be placed more than 3 pairs of shoe rack. The highly of the frame is adjustable according to the internal wardrobe with-adjustable from 200mm.

MATERIAL

Modern fashion appearance of the aluminum frame with a new high-purity aluminum alloy material, can ensure the stability of the product.

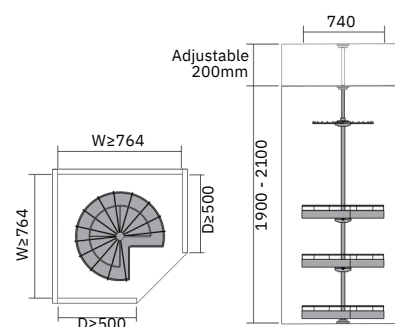
INSTALLATION

The product is suitable for the standard cabinet, the optimum thickness of the cabinet board is 16-18mm.

Code	Cabinet	W x D x H	Color
SWS 21208.080	≥800	700 x 360 x 1630-1830 (10 Layer)	Grey



[GRAYER] 4 LAYERS ROTATING BASKET



Functional Features

DESIGN

Solve corner space for you, make full use of corner space. No intermediate partition, easy to take at a glance.

FUNCTION

Each layer of built-in bearing device, unique, easy and smooth rotation 360°; The upper and lower layers rotate independently. The corner space that made the maximum use.

FEATURE

The height can be adjusted for 200mm. A cabinet suitable for 1900-2100mm height.

MATERIAL

The main body adopts nano dry plating process, with strong anti-rust ability, multi-layer design and powerful storage function.

INSTALLATION

The product is suitable for the standard cabinet, the optimum thickness of the cabinet board is 16-18mm.

Code	Cabinet	W x D x H	Color
SWB 21209-2G	≥800	720 x 720 x (1900-2100)	Grey



[GRAYER] REVOLVE MIRROR



Functional Features

DESIGN

The revolve mirror adopts European style design, can be hidden, can be rotated at multiple angles, and the pull-out design is smoother, covering a small area and large wardrobe space.

FUNCTION

Easy to operate, easy to rotate, promote the collection step in place, no need to change the position of clothes hanging in the wardrobe, suitable for all styles of wardrobe collection.

FEATURE

A thin body that occupies only one piece of clothing.

MATERIAL

The product is made of high-purity aluminum alloy material, which ensures the toughness and stability of the material, and fashionable in appearance.

INSTALLATION

Side installation, do not divide left and right, let us install the product when more follow one's inclinations.

Code	Cabinet	W x H	Color
SWS21604-120	≥350	350 x 1200	Grey



Functional Features

DESIGN

Fashion simple design, hidden folding and rotation, convenient and easy to use.

FUNCTION

With high-grade gas spring can achieve butter damping effect under the stretch process.

FEATURE

The product come with pull out function, and the panel can be rotated 90 degrees.

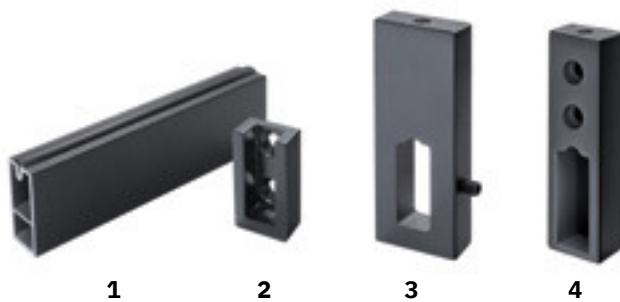
MATERIAL

Fine canvas with built-in sponge. Multilayer wood composite plate + stainless steel. ABS plastic: Impact resistance, heat resistance, low temperature resistance and chemical resistance.

INSTALLATION

Simple installation, convenient and fast, just a few screws are needed to install it.

Code	Description	D x W x H	Cabinet	Color
SWS21204-2	Rotatable and foldable pull out ironing board	430 x 295 x 140	≥ 450	Grey



Functional Features

1 Square Tube

Square tube now offer unique options for your closet space.

2 Square Tube Holder

The holder is used to support the square tube for hanging clothes.

3 Square Holder Center Connector

When the length of the carcass is longer, we need a center connector to support the square tube to make it strength.

4 Square Hanger Bracket

This is another option to replace square tube holder, to make the wardrobe system more unique.

Code	Description	L x W x H	Color
SFT 48818-300	Square Tube	3000 x 12 x 31	Black
SFT 48817 SFT	Square Tube Holder	23 x 12 x 40	Black
48816 SFT	Square Holder Center Connector	30 x 10 x 80	Black
48814	Square Hanger Bracket	20 x 10 x 75	Black

